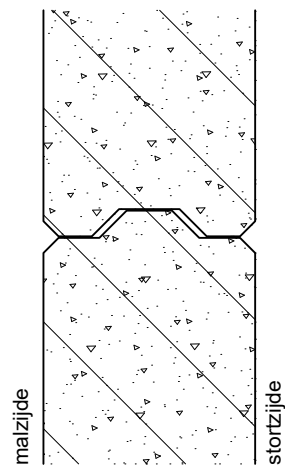
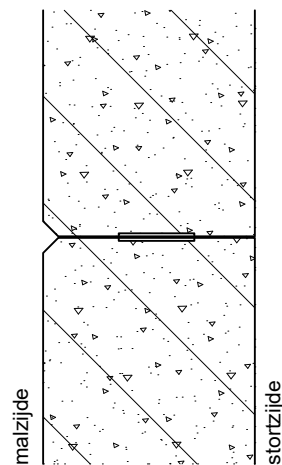


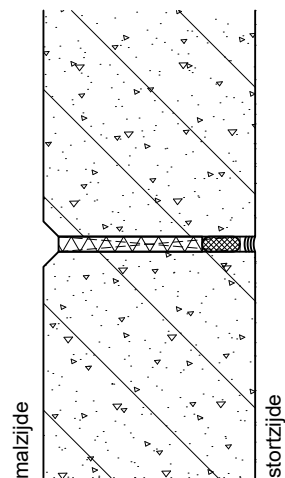
*1



*2

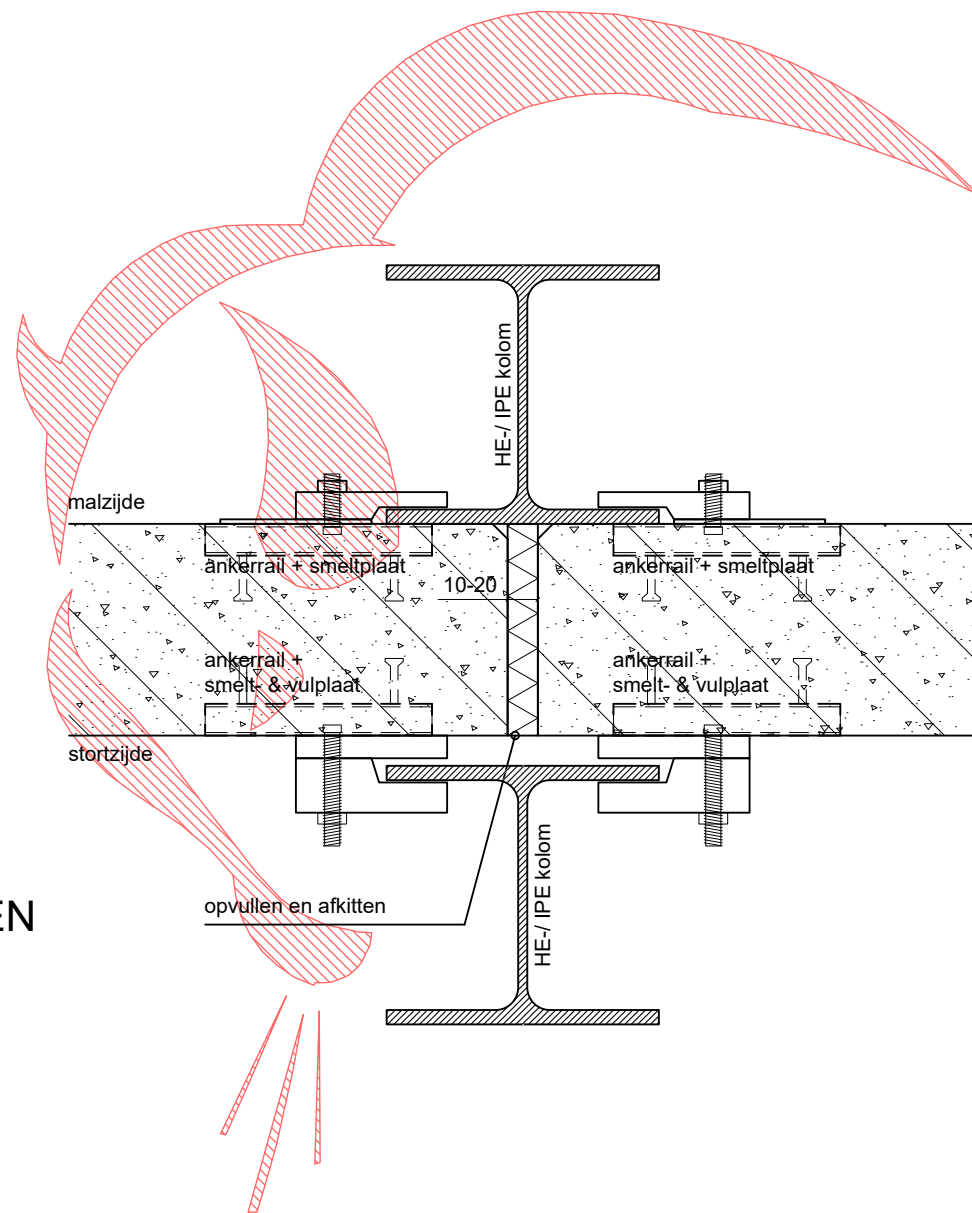


*3



STAPELING PANELEN BRANDWAND

- *1) mes- en groef
- *2) koud gestapeld, eventueel met (brandwerend) comprimerend band
- *3) stapeling met deelnaad, naad brandwerend af te dichten



PRINCIPEDetails BRANDWANDEN



BisoTON B.V.
Curiestraat 4-6
6716 AR Ede

0318-300070
info@bisoton.nl
www.bisoton.nl